

# z·BASE

REGISTRATION | ACCESS | CIRCULATION

## SOLUTION OVERVIEW



“

**z·BASE** is a digital registration, access control and circulation management system for Military Bases or other secure areas.

All physical ID cards have known security flaws. z·BASE fills those holes to deliver maximum security, scalability, and cost effectiveness.

”

### Mobile Centric

**Digital-first** software-only solution leverages ubiquitous smartphones and existing networking infrastructure to maximize security and scalability. z·BASE incorporates best-in-class user authentication, embedded biometrics, dynamic authorization codes, and encryption to minimize adversary attack vectors.

### Registration

**Smartphone-based registration** is fast and efficient. Users are authenticated against government IDs including facial recognition and liveness tests. Smartphone biometrics are used to support real-time ID verification on-demand, even in disconnected environments. Custom base-defined registration fields are available on request.

### Access Control

**Reader app** supports user identification and access authorization on-the-fly for maximum ACP throughput. User biometric validation clock limits authorization hand-off. AI scoring analytics including hysteresis assess risk. C2 module performs red flag database checks on approach.

### Circulation Management

**Base-wide monitoring** of user's circulation policy compliance is conducted automatically and continuously. C2 module generates alerts to BDOC with risk score and resolution workflow. Base security personnel running TAK can access real-time location and tracking of events.

# z·BASE

## SYSTEM COMPONENTS



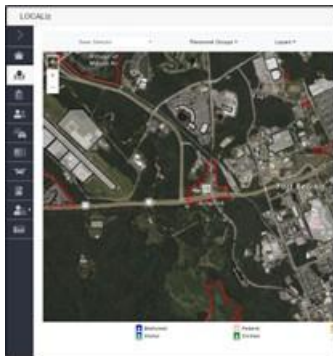
### z·BADGE App

**User smartphone app** conducts initial registration process and generates dynamic transient access codes for entry. Privacy-safe design hibernates off base and activates on approach. Authentication and validation processes against government-issued ID minimizes fraud,



### z·READER App

**ACP personnel app** reads z·BADGE access codes remotely on approach or manually as desired. Includes AI-based risk score for each approaching vehicle, rapid access to details, and yes/no access buttons. Operates when disconnected.



### LOCALiz Cloud

**C2 Software** platform for data fusion, policy management, C2 services and external database or COP integration. GIS-centric server-side software supports cloud, edge, or hybrid architectures in milCloud environments and interfaces to Bulzī's ENLITN AI training module.

## BULZĪ

### About Bulzī

Bulzī (“bull’s-eye”) is a pioneer and a leader in applying AI to Internet of Things (IoT) devices.

The company’s technologies were originally developed for the commercial market and focused on using IoT sensors to detect smartphones as a proxy for people. It has adapted them to support situational awareness and health safety in military and civil government markets.

Bulzī qualifies for SBIR Phase-III Federal agency contracting advantages, including sole-sourced contracts without competitive bidding.